



MONTHLY MEMBERSHIP PROGRESS REPORT

District 19 I

Results as of: 3/31/2014

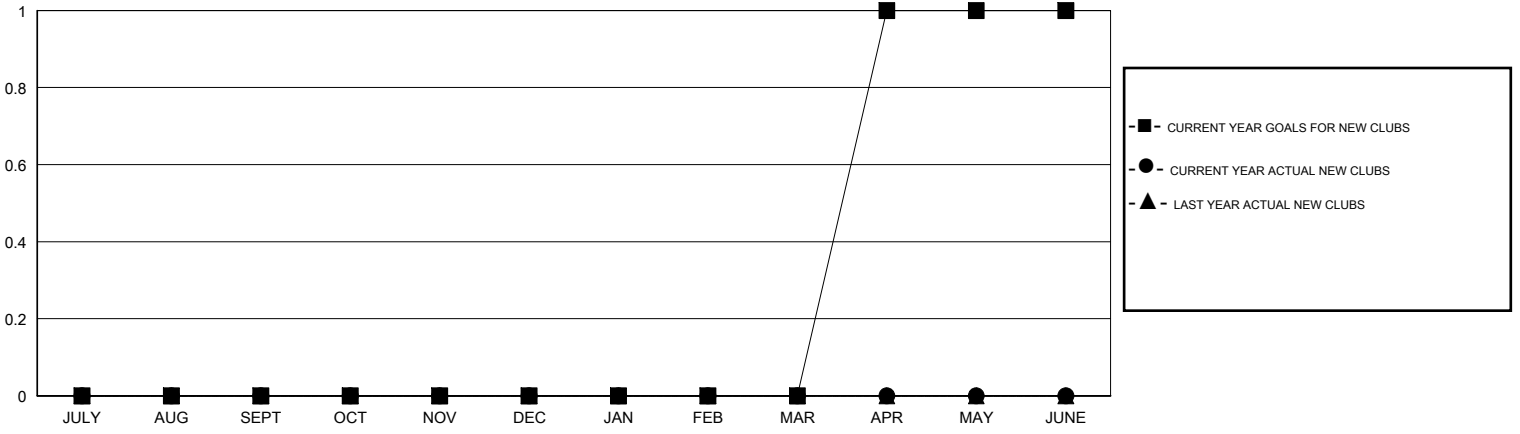
GMT: Andre Nimchuk

LOCATION WASHINGTON

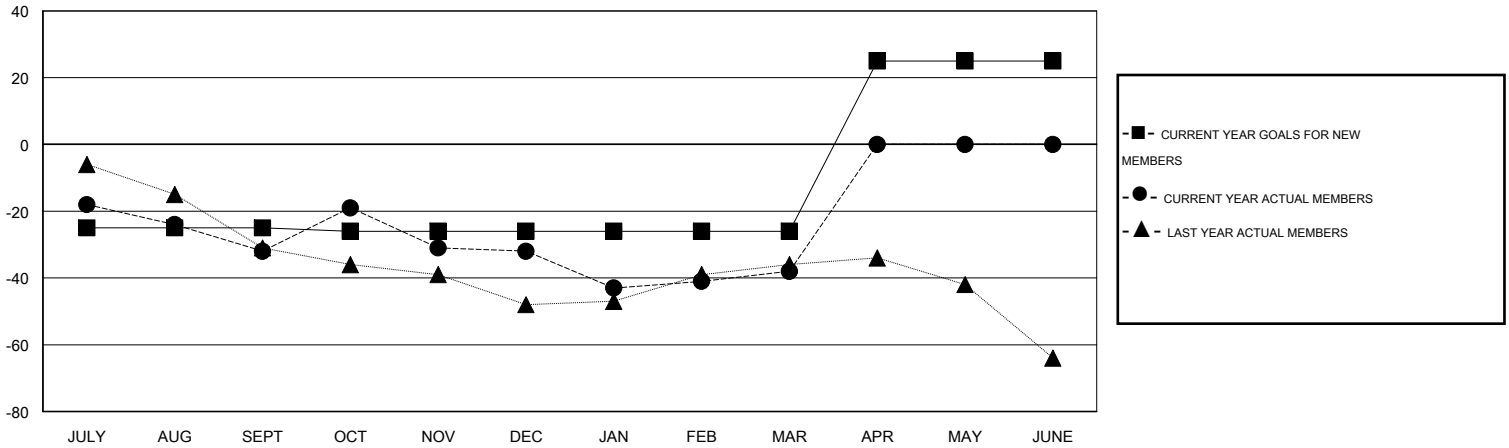
GMT CA 2

Clubs					Members				
RESULTS FOR 2013-2014					RESULTS FOR 2013-2014				
QUARTER	NEW CLUB GOAL	ACTUAL NEW CLUBS	ACTUAL DROPPED CLUBS	ACTUAL NET GAIN/LOSS	QUARTER	NEW MEMBER GOAL	ACTUAL TOTAL MEMBERS ADDED	ACTUAL DROPPED MEMBERS	ACTUAL NET GAIN/LOSS
JULY/AUG/SEPT	0	0	0	0	JULY/AUG/SEPT	-25	25	57	-32
OCT/NOV/DEC	0	0	0	0	OCT/NOV/DEC	-1	34	34	0
JAN/FEB/MAR	0	0	0	0	JAN/FEB/MAR	0	30	36	-6
APR/MAY/JUNE	1	0	0	0	APR/MAY/JUNE	51	0	0	0

GOALS AND ACTUAL NEW CLUBS CUMULATIVE



GOALS AND ACTUAL MEMBERS CUMULATIVE



DROPPED CLUBS: 0	30 CLUBS OF 52 ADDED 1 OR MORE NEW MEMBERS	GENDER DISTRIBUTION
		MALE 877 (70.16%)
		FEMALE 373 (29.84%)
DROPPED MEMBERS	CLICK HERE FOR HEALTH ASSESSMENT DATA	FAMILY UNIT MEMBERS 203
DECEASED 23		HEAD OF HOUSEHOLD 100
CLUB CANCELLED 0		NON-HEAD OF HOUSEHOLD 103
OTHER 104		
TOTAL 127		